



***J-Mod* CABLE SUPPORT SYSTEM INSTALLATION INSTRUCTIONS**

Step 1: Determine Installation Type

- A.** If mounting to a structural member, choose appropriate bracket and use with J Hook JMJH2-X20.



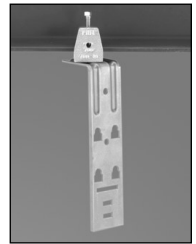
Ceiling Mount
Bracket



Drop Wire
Bracket



Threaded Rod
Bracket



Screw-On Beam
Clamp Bracket

- B.** If mounting to wall, select J Hook JMJH2W-X20 and secure with two user supplied screws to complete installation.



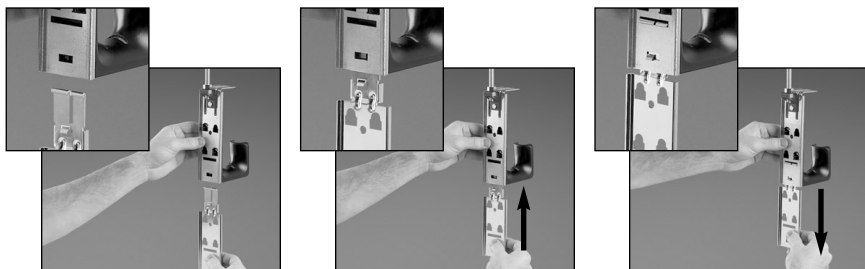
Step 2: First-Level Installation

Align snap lock attachment of J Hook with holes of the chosen bracket and snap J Hook into position. If additional capacity is needed, a second J Hook can be snapped on the back. (The photos below show an example of a single-level threaded rod bracket installation.)



Step 3: Addition of Chaining Bracket

If additional levels are required, install the chaining bracket JMCB-X. To install the chaining bracket, align it under the assembly. Slide chaining bracket between the J Hook and the metal bracket until it snaps into place. The chaining bracket can be inserted in only one orientation. After the chaining bracket snaps into place, pull down to fully engage and create a continuous metal backbone.



Step 4: Second-Level Installation

Attach J Hooks as explained in first-level installation above. Repeat for additional J Hooks as necessary. If required, one additional chaining bracket may be installed to create a maximum third-level installation. (Final assembly shown is a second-level installation consisting of one threaded rod bracket, one chaining bracket, and four J Hooks.)



Part No. JM-INST, Rev. R
Printed in U.S.A.

17301 Ridgeland Ave.
Tinley Park, IL 60477-3091
Phone: 866-405-6657
FAX: 770-781-9076
Email: wainfo@panduit.com
Website: www.panduit.com/ncg