

DS-3E0106HP-E

4-Port 100 Mbps Long-Range Unmanaged PoE Switch

DS-3E0106HP-E switches are layer 2 100 Mbps long-range PoE switches, providing 1 × 10/100 Mbps Hi-PoE port, 3 × 10/100 Mbps PoE ports, and 2 × 10/100 Mbps RJ45 ports. The switches provide advanced Hi-PoE/PoE technology and support extend mode with long-range access up to 300 m. The prior and stable transmission of the important surveillance area videos can also be guaranteed when connected to the high priority ports. Meanwhile, the 2 × 10/100 Mbps RJ45 uplink ports guarantee applications of multiple network solutions.



Intelligent PoE



300 m Transmission



802.3bt Hi-PoE



8-Core Power Supply



6 KV Surge Protection



High Priority Ports

Feature and Function

Intelligent PoE Management.

- When the power supply exceeds the limit, PoE ports intelligently manage the power supply, which extends the switch lifetime.

Up to 300 m Long Range PoE Transmission.

- The distance between IPCs and switch can reach maximum 300 meters.

IEEE 802.3bt Standard Hi-PoE, Max. 60 W for One Port.

- IEEE 802.3bt standard Hi-PoE port provides max. 60 W power supply for high power devices such as domes or other 802.3bt devices.

4/8-Core Adaptive Power Supply with Less Power Loss.

- 8-core power supply reduces the power loss on cables.

6KV Surge Protection to Improve Reliability in Harsh Environment.

- The built-in surge protection device protects the switch from the sudden lightning surge in harsh environment.

Design for Video Transmission.

- VIP port ensures important data transmission when network congestion occurs.

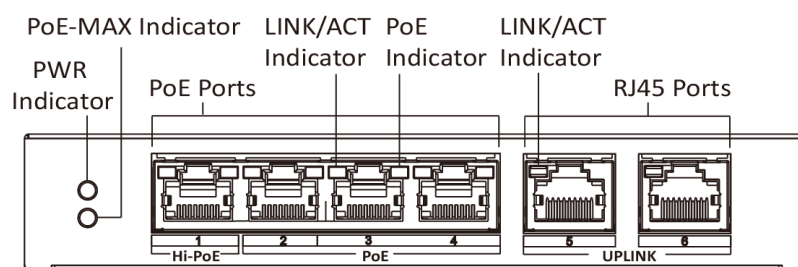


Specification

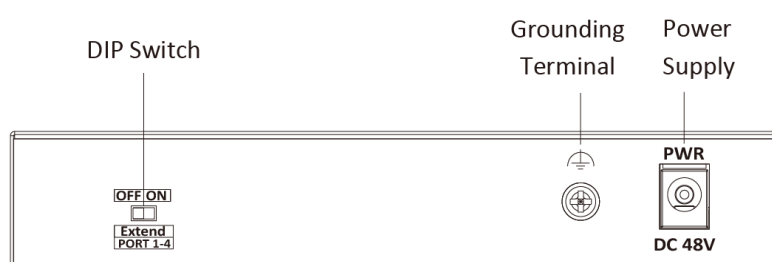
Model		DS-3E0106HP-E
Network parameters	Port number	1 × 10/100 Mbps Hi-PoE port, 3 × 10/100 Mbps PoE ports, and 2 × 10/100 Mbps RJ45 ports
	Port type	RJ45 port, full duplex, MDI/MDI-X adaptive
	Standard	IEEE 802.3, IEEE 802.3u, IEEE 802.3x
	Forwarding mode	Store-and-forward switching
	Working mode	Standard mode (default); Extend mode
	High priority port	Ports 1 to 2
	Ports for long-distance transmission	Ports 1 to 4
	MAC address table	2 K
	Switching capacity	1.2 Gbps
	Packet forwarding rate	0.893 Mpps
	Internal cache	768 Kbits
PoE power supply	PoE standard	Port 1: IEEE 802.3af, IEEE 802.3at, IEEE 802.3bt Ports 2 to 4: IEEE 802.3af, IEEE 802.3at
	PoE power pin	Support 8-core power supply, Ethernet cable 1/2/3/6 and 4/5/7/8 provide power supply simultaneously.
	PoE port	Ports 1 to 4
	Max. port power	Port 1: 60 W Ports 2 to 4: 30 W
	PoE power budget	60 W
	Max. power consumption	65 W
General	Shell	Metal material, fan-free design
	Gross weight	0.77 kg (1.70 lb)
	Net weight	0.24 kg (0.53 lb)
	Dimension (L × H × D)	145 mm × 25.6 mm × 68.45 mm (5.7" × 1.0" × 2.7")
	Operating temperature	-10 °C to 55 °C (14 °F to 131 °F)
	Storage temperature	-40 °C to 85 °C (-40 °F to 185 °F)
	Operating humidity	5% to 95% (no condensation)
	Storage humidity	5% to 95% (no condensation)
	Power supply	48 VDC, 1.35 A
	Power consumption in idle	5 W
Approval	EMC	FCC (47 CFR Part 15, Subpart B); CE-EMC (EN 55032: 2015, EN 61000-3-2: 2014, EN 61000-3-3: 2013, EN 55024: 2010 +A1: 2015); RCM (AS/NZS CISPR 32: 2015); IC (ICES-003: Issue 6, 2016)
	Safety	UL (UL 60950-1); CB (IEC 60950-1:2005 + Am 1:2009 + Am 2:2013); CE-LVD (EN 60950-1:2005 + Am 1:2009 + Am 2:2013)
	Chemistry	CE-RoHS (2011/65/EU); WEEE (2012/19/EU); Reach (Regulation (EC) No 1907/2006)

Physical Interface

Front panel:



Back panel:



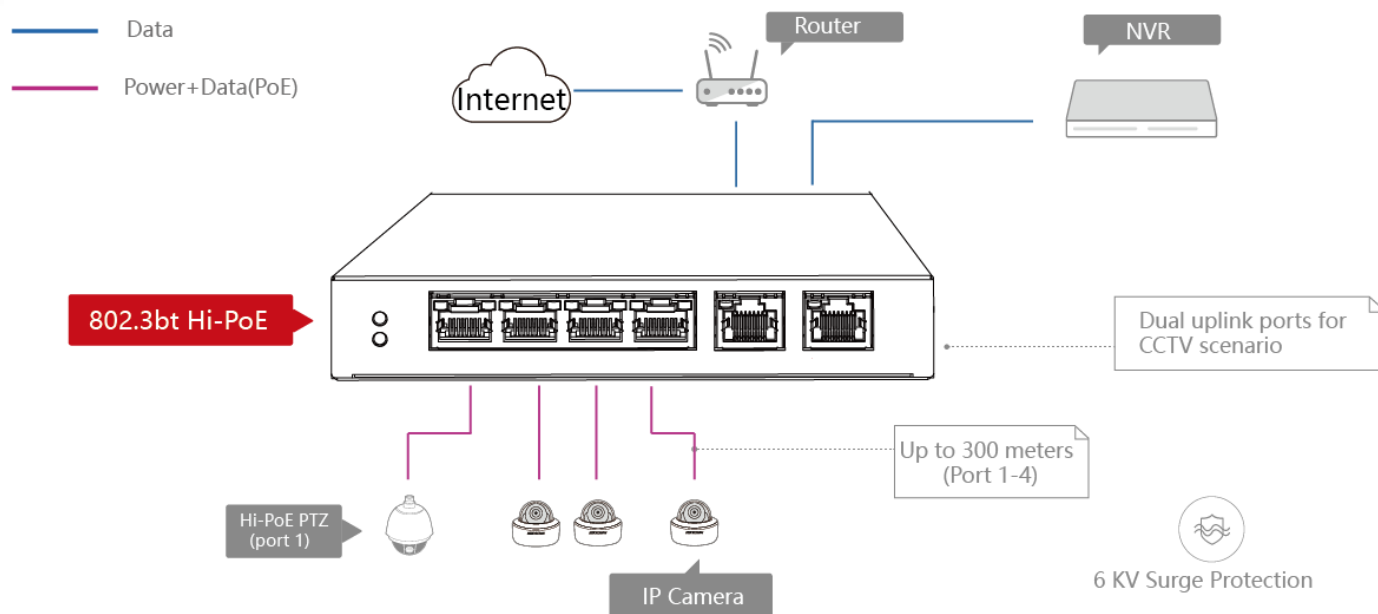
Available Model

DS-3E0106HP-E

Dimension (unit: mm)



Typical Application



Distributed by

HIKVISION®

Headquarters

No.555 Qianmo Road, Binjiang District,
Hangzhou 310051, China
T +86-571-8807-5998
overseasbusiness@hikvision.com

HIKVISION USA
T +1-909-895-0400
sales.usa@hikvision.com

HIKVISION Australia
T +61-2-8599-4233
salesau@hikvision.com

HIKVISION India
T +91-22-28469900
sales@pramahirvision.com

HIKVISION Canada
T +1-866-200-6690
sales.canada@hikvision.com

HIKVISION Thailand
T +662-275-9949
sales.thailand@hikvision.com

HIKVISION Europe
T +31-23-5542770
sales.eu@hikvision.com

HIKVISION Italy
T +39-0438-6902
info.it@hikvision.com

HIKVISION Brazil
T +55 11 3318-0050
Latam.support@hikvision.com

HIKVISION Turkey
T +90 (216)521 7070- 7074
sales.tr@hikvision.com

HIKVISION Malaysia
T +601-7652-2413
sales.my@hikvision.com

HIKVISION UK & Ireland
T +01628-902140
sales.uk@hikvision.com

HIKVISION South Africa
Tel: +27 (10) 0351172
sale.africa@hikvision.com

HIKVISION France
T +33(0)1-85-330-450
info.fr@hikvision.com

HIKVISION Kazakhstan
T +7-727-9730667
nikia.panfilov@hikvision.ru

HIKVISION Vietnam
T +84-974270888
sales.vt@hikvision.com

HIKVISION UAE
T +971-4-4432090
salesme@hikvision.com

HIKVISION Singapore
T +65-6684-4718
sg@hikvision.com

HIKVISION Spain
T +34-91-737-16-55
info.es@hikvision.com

HIKVISION Tashkent
T +99-87-1238-9438
uzb@hikvision.ru

HIKVISION Hong Kong
T +852-2151-1761
info.hk@hikvision.com

HIKVISION Russia
T +7-495-669-67-99
saleru@hikvision.com

HIKVISION Korea
T +82-(0)31-731-8817
sales.korea@hikvision.com

HIKVISION Poland
T +48-22-460-01-50
info.pl@hikvision.com

HIKVISION Indonesia
T +62-21-2933759
Sales.Indonesia@hikvision.com

HIKVISION Colombia
sales.colombia@hikvision.com