

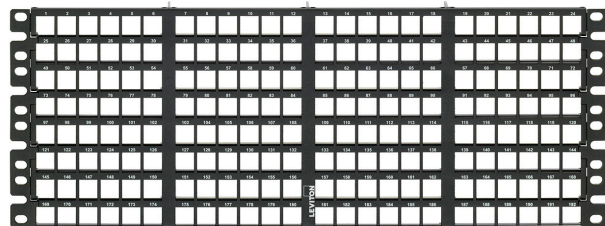
e2XHD High Density Flat Panels & Accessories

APPLICATION

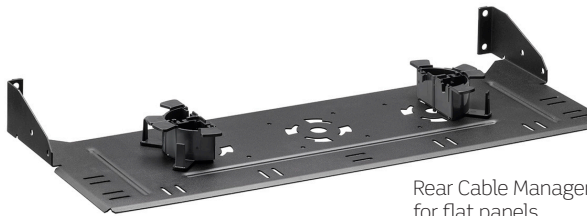
The e2XHD Patching System provides a high-density solution for enterprise and data center applications where fast deployment and simple maintenance are priorities. Cassettes quickly snap-in and pull out of 1RU and 4RU panels, making installation, moves, adds, and changes easier than ever. A rear cable manager is available to support incoming fiber and copper cables, and blank cassettes snap into the rear of panels to block any unused openings. Copper cassettes are available either on pre-terminated trunks or with field-terminated connectors, and fiber cassettes are pre-terminated.



e2XHD Flat Panel - 1RU



e2XHD Flat Panel - 4RU



Rear Cable Manager for flat panels



Universal Opt-X® Clamp Kit



Blank Cassette

SPECIFICATION

Panels shall be constructed of 20-gauge steel with a black powder-coated finish. Port identification shall be included. Panels shall accept both copper and fiber e2XHD cassettes, and hold up to 48 duplex fiber channels or 48 copper ports in a 1RU space. Copper and fiber cassettes shall snap into rear of panel and shall require no tools to remove. Panel shall meet all TIA 568-C.0 requirements and all applicable standards.

FEATURES

- Panels allow mix-and-match of fiber/copper e2XHD cassettes
- Alignment tabs ensure upright insertion of cassettes
- To remove cassettes from panel, simply pull out handle using release latch
- Rear Cable Manager supports incoming copper or fiber cables, and includes cable management rings
- Blank Cassette available for unused cassette openings

DESIGN CONSIDERATIONS

- Panels mount on standard 19" relay rack or cabinet
- Cable clamp mounting kits are available to provide strain relief for incoming trunk cables
- When routing copper cable, one Rear Cable Manager is recommended for every 2RU of panel to allow for better rear access

PHYSICAL SPECIFICATIONS

Dimensions: See page 2
Material: 20-gauge steel, powder-coated black
Capacity: 1RU: 48 duplex fiber channels or 48 copper ports
1RU: Accepts up to 8 copper and/or fiber cassettes (12-fiber LC-MTP®, 24-fiber MTP-MTP), or 4 24-fiber LC-MTP cassettes
4RU: 192 fiber channels or 192 copper ports
4RU: Accepts up to 32 copper and/or fiber cassettes (12-fiber LC-MTP®, 24-fiber MTP-MTP) or 16 24-fiber LC-MTP cassettes

STANDARDS COMPLIANCE

Patch panel compliant with TIA-568-C.0, UL1863

COUNTRY OF ORIGIN

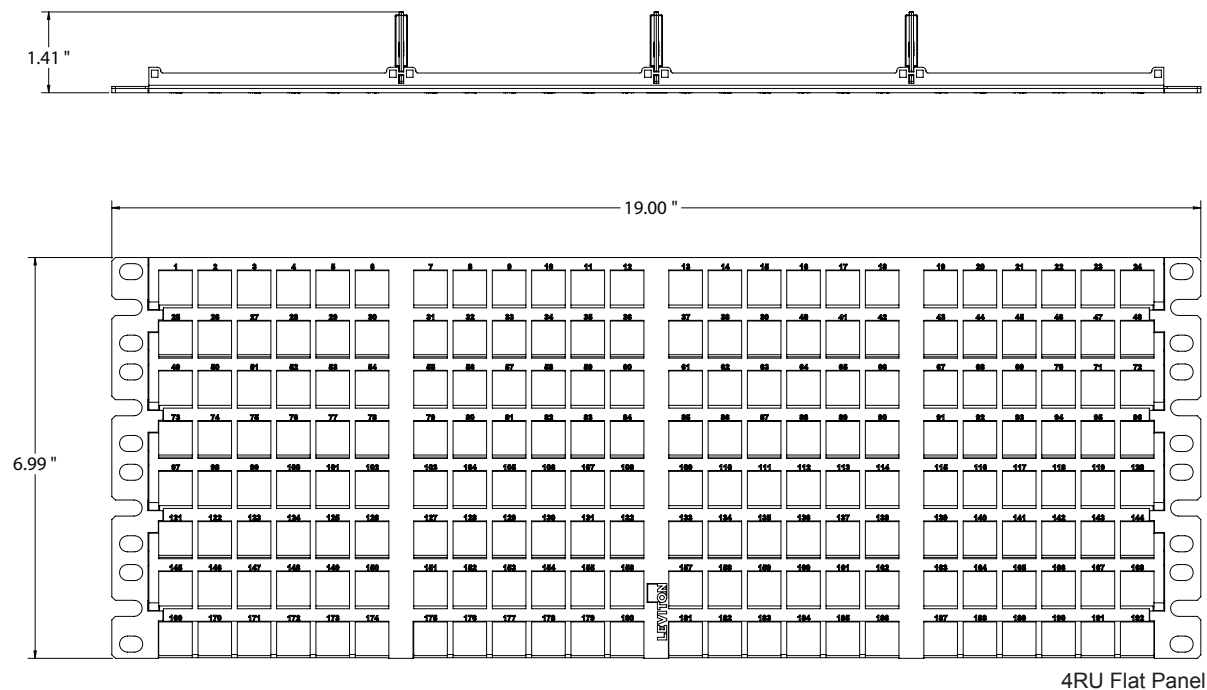
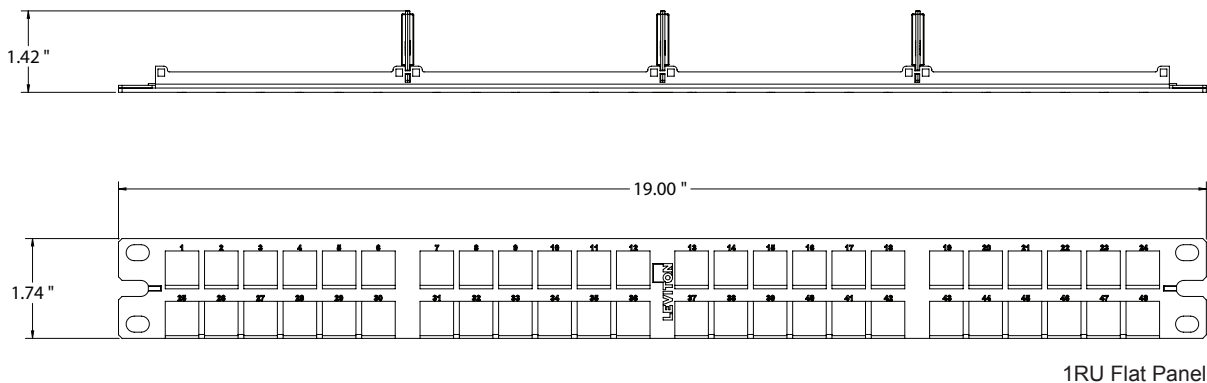
United States of America

WARRANTY INFORMATION

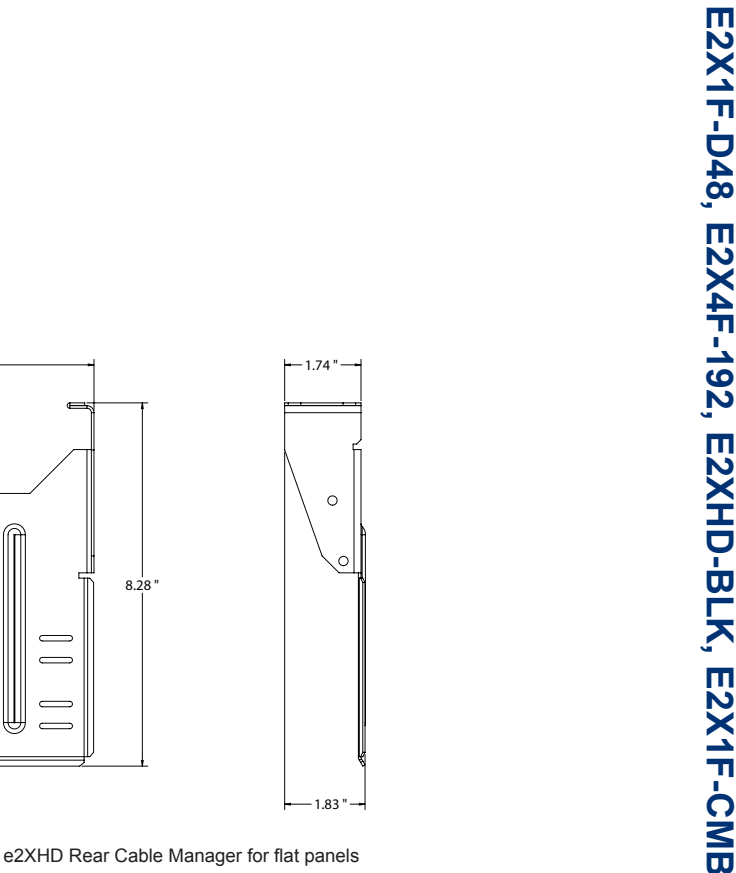
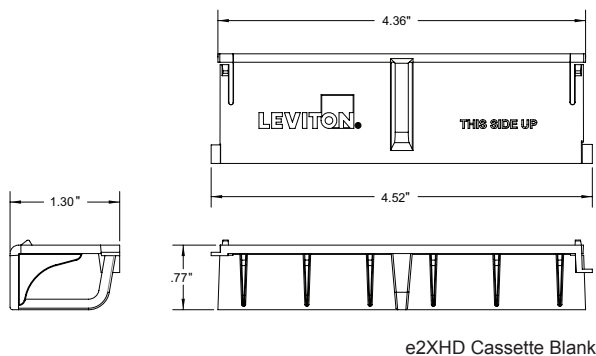
For a copy of Leviton product warranties, visit www.leviton.com/warranty

ELECTRONIC FILES

For CAD files, typical specs, or technical drawings (.DXF, .DWG), visit www.leviton.com.



E2X1F-D48, E2X4F-192, E2XHD-BLK, E2X1F-CMB



e2XHD PATCHING SYSTEM	
Description	Part No.
e2XHD 1RU High Density Flat Panel	E2X1F-D48
e2XHD 4RU High Density Flat Panel	E2X4F-192
e2XHD Cassette Blank	E2XHD-BLK
e2XHD Rear Cable Manager for flat panels, with fiber cable management rings (four 1/4 rings)	E2X1F-CMB
Universal Opt-X® Clamp Kit, single cable grommet (mounts to Rear Cable Manager)	5RCMP-KIT
Universal Opt-X® Clamp Kit, multiple cable grommet (mounts to Rear Cable Manager)	5RCMP-KT2
Universal Clamp Kit, single and multiple cable grommet (for rack mounting)	5RCMR-KIT

