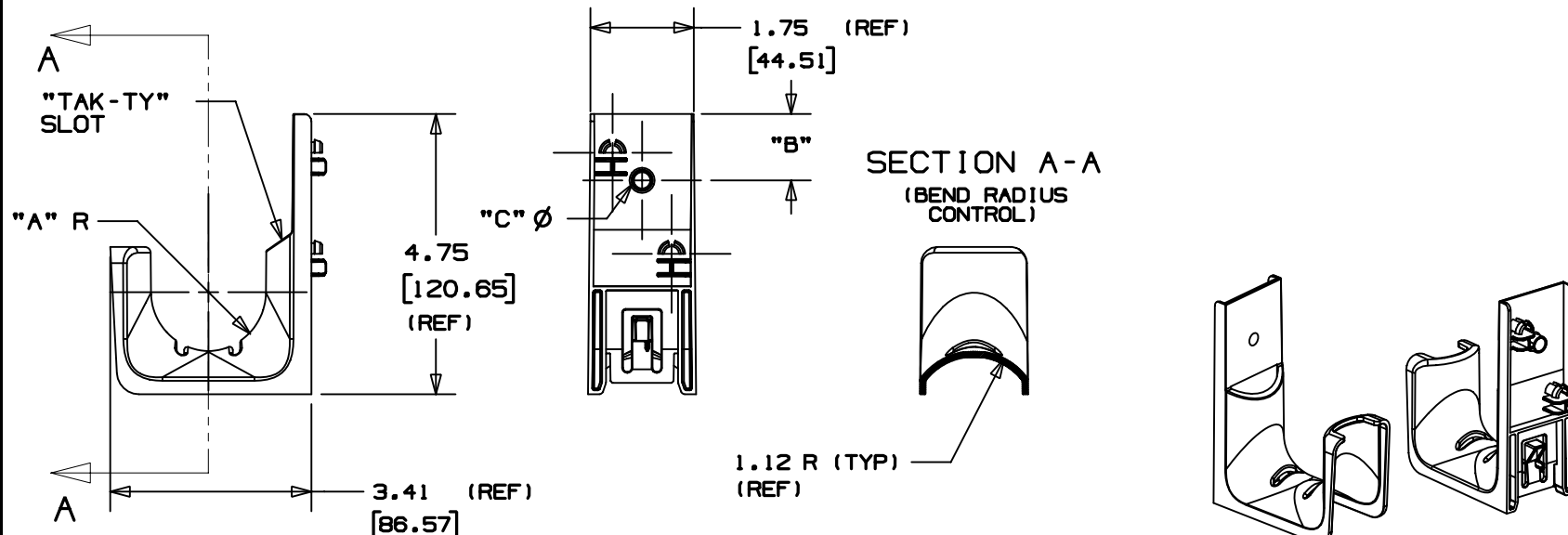


"TAK-TY" SLOT

PANDUIT PART NO. *	DIMENSIONS			PRODUCT WORKS WITH PANDUIT PART NUMBERS	WEIGHT lbs. / 10 (g) / pcs.
	"A" (REF)	"B" (REF)	"C"		
JMJH2-___	1.00 (25.4)	1.125 (28.57)	0.280 (7.11)	JMCMB25-1, JMCMB25-3, JMCB (SEE NOTE 4)	1.01 (456.86)



1. SEE CURRENT PRICE SHEET FOR PART NUMBER SUFFIX DESIGNATION FOR PACKAGE SIZE AND PRODUCT COLOR.
2. PRODUCT IS DESIGNED TO SUPPORT A MAXIMUM 2.0" DIAMETER BUNDLE. RECOMMENDED MAXIMUM STATIC LOAD: 30.0 lbs.
3. PRODUCT INCORPORATE FEATURES ALLOWING USER TO SECURE CABLE BUNDLES IN JMOO PRODUCT WITH "TAK-TY" CABLE TIES UP TO 3/4" WIDE.
4. JMJH2 INCORPORATES FEATURES THAT ALLOW FOR RAPID INSTALLATION TO THE FOLLOWING PANOUT ACCESSORIES FOR A VARIETY OF MOUNTING CONFIGURATIONS:
 - A.) JMCMB25-1 (CABLE MANAGEMENT ANGLE BRACKET-SINGLE LEVEL)
(RIVET ASSEMBLIES AVAILABLE FOR A VARIETY OF APPLICATIONS)
 - B.) JMCMB3-1 (CABLE MANAGEMENT ANGLE BRACKET-THREE LEVEL)
(RIVET ASSEMBLIES AVAILABLE FOR A VARIETY OF APPLICATIONS)
 - C.) JMCB (CABLE MANAGEMENT CHAINING BRACKET EXTENDER)
(DEVICE IS USED TO ADD UP-TO 2 ADDITIONAL LEVELS OF CABLE MANAGEMENT TO JMCMB25-1)

DIMENSIONS IN BRACKETS ARE METRIC [mm]			
CAD FILENAME/LAYERS		G02672DC_PB_JMJH2_00	
<div style="display: flex; justify-content: space-between; align-items: center;"> <div style="text-align: center;"> <h1 style="margin: 0;">PANDUIT</h1> <p style="margin: 0;">CORP.</p> </div> <div style="text-align: right;"> <p style="margin: 0;">TINLEY PARK, ILLINOIS</p> </div> </div>			
<p>(JMJH2-____)</p> <p>JMOD J HOOK</p>			
UNLESS OTHERWISE SPECIFIED, DIMENSIONAL TOLERANCES ARE: (.X) ±0.05 (1.3) (.XXX) ±0.010 (0.25) (.XX) ±0.02 (0.5) ANGLES ± 5°		UNLESS OTHERWISE SPECIFIED, ALL DIMENSIONS ARE GIVEN IN INCHES, THIRD ANGLE PROJECTION.	
DRAWN BY	JAD	SCALE NONE DRAWING NO. GB2672DC <div style="display: flex; justify-content: space-between; align-items: center;"> <div></div> <div style="text-align: right;"> <p style="font-size: 2em; margin: 0;">A</p> <p style="margin: 0;">SIZE</p> </div> </div>	
DATE	4/1/03		
CHK'D			
MAT'L:		NYLON 6/6	