

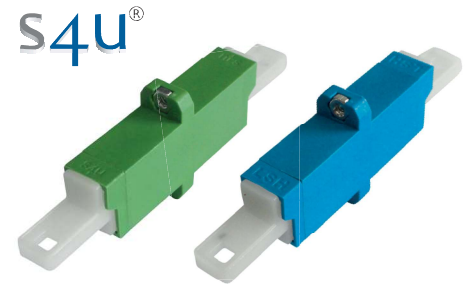
## Data Sheet s4u<sup>®</sup> LSH Simplex Adapter

### Numerous applications

Fiber Optic Backbones, CATV and FTTH Networks, Data Centers, High Power Optical Amplifiers

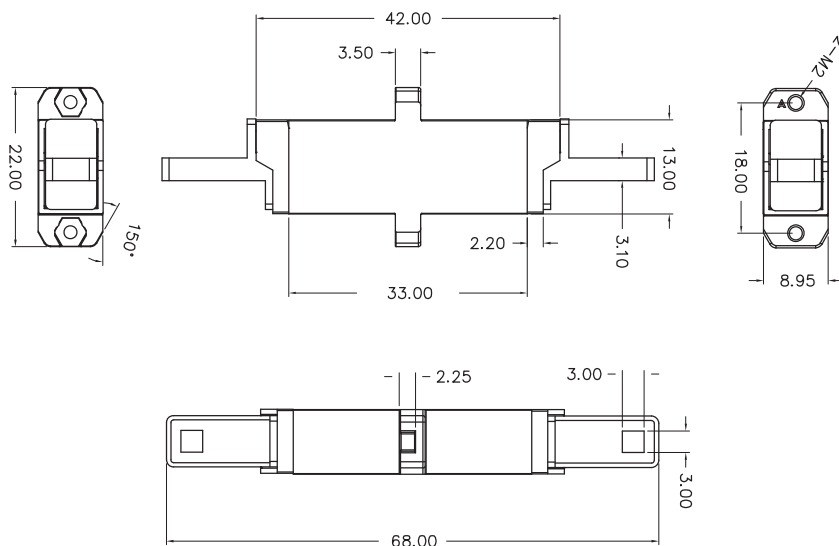
### Unique features

- low loss mating with excellent repeatability
- high return loss connection
- robust design with reliable locked push-pull mechanism
- automatically closing metallic laser beam shutter for safety up to 3W
- replaceable frames with color coding or keying options
- semi-transparent dust caps for channel identification with laser pointer



### Specifications

Compliance	IEC 61754-15, TIA 604-16, RoHS
Alignment technology	full ceramic sleeve
Operating temperature	−40°C to +85°C
Flammability	UL94 V-0
Durability	> 1000 mating cycles
IL repeatability	< 0.1dB



### Order information

Order code	Description	Color	Packing
AD-LSH-SX-APC-S	LSH APC Adapter, with flange and screw nuts for panel fixation	green	100
AD-LSH-SX-UPC-S	LSH UPC Adapter, with flange and screw nuts for panel fixation	blue	100
AD-LSH-SX-BGE-S	LSH MM Adapter, with flange and screw nuts for panel fixation	beige	100
AD-LSH-SX-BLK-S	LSH MM Adapter, with flange and screw nuts for panel fixation	black	100