

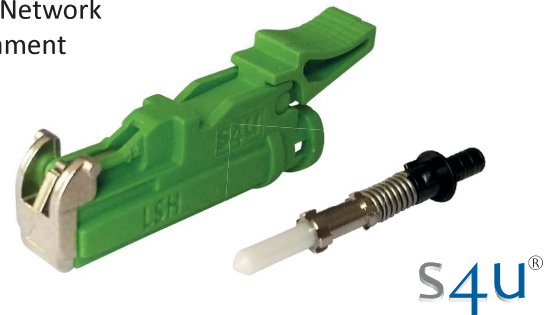
Data Sheet s4u® LSH Connector

Numerous applications

FTTX and CATV Networks, LAN and Data Centers, Test and Measurement, Network Equipment Interface, High Power Optical Amplifiers, Uncontrolled Environment according IEC 61753-021-3

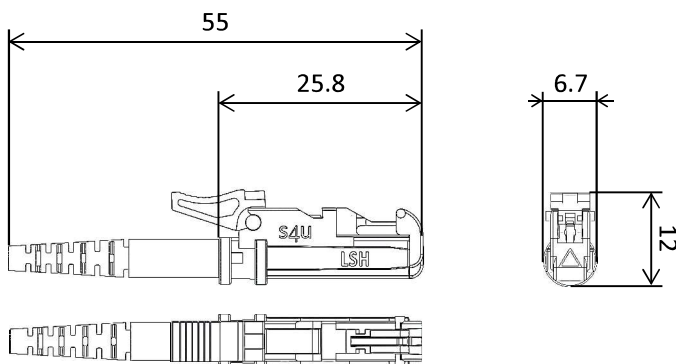
Unique features

- robust design with locked push-pull mechanism
- automatic closing metallic shutter for ferrule end-face protection and laser beam safety
- low loss mating with excellent repeatability
- "0.1dB" version with PREMIUM ferrule
- high return loss connection
- replaceable lever with color coding and keying options
- fully compatible to E-2000 products
- Swisscom approved



Specifications

Compliance	IEC 61754-15, TIA 604-16, RoHS, Swisscom Spec.
Alignment technology	2.5mm full ceramic ferrule (Zirconia ZrO2)
Operating temperature	-40°C to +85°C
Flammability	UL94 V-0
Durability	IEC 61300-2-2, > 1000 mating cycles
Fiber, cable retention	IEC 61300-2-4; 100N on 2.0mm cable
Static side load	IEC 61300-2-42; 5N on 2.0mm cable
Flexing of strain relief	IEC 61300-2-44, 5N on 100 bending cycles
Insertion loss, fiber core tunability	IEC 61755-3-1 / IEC 61755-3-2, Grade B, 0.25dB on 97% PREMIUM Version: 0.15dB on 97%
Return loss	APC > 85dB, UPC > 50dB, MM > 35dB
Housing color (standard)	green: singlemode APC 8° singlemode UPC: blue multimode: black or beige



Data Sheet s4u® LSH Pigtails

Numerous applications

Behind-The-Wall application in high-density passive optical networks

Unique features

- fully compatible to E-2000 products
- bend limiting boots
- meets Telcordia GR-0326-CORE requirements for high-density applications
- short rigid lengths
- metallic automatic shutter
- Pigtail-sets with 12 or 24 fibers
- color options for lever, housing and boot



Specifications

Compliance	IEC 61754-15, TIA 604-16, RoHS
Alignment technology	Full ceramic ferrule (Zirconia ZrO2)
Operating temperature	-40°C to +85°C
Flammability	UL94 V-0
Durability	> 1000 mating cycles
Transmission with applied tensile load	GR-0326-CORE 4.4.3.5
Optical performance, insertion loss	Singlemode: $\leq 0.25\text{dB}$ Multimode: $\leq 0.25\text{dB}$ Low-loss: $\leq 0.15\text{dB}$
Optical performance, return loss	Singlemode APC: $> 85\text{dB}$ Singlemode UPC: $> 50\text{dB}$ Multimode: $> 35\text{dB}$
Cable types	0.6 or 0.9mm easy-strip (12 colors + 12 colors dashed) 0.6 or 0.9mm tight-tube
Connector end face geometry	IEC 61755-3
Tuning	IEC 61755-3-2

