

# CCR1016-12S-1S+

CCR1016 is an industrial grade router with a cutting edge 16 core Tiler CPU. If your network requires to operate with millions of packets per second - Cloud Core Router with 16 cores is your best choice.

This model has twelve SFP ports and one SFP+ port for 10G connectivity. It is available in a 1U rackmount case and also has a RJ45 console port, a touchscreen LCD and a USB port. The CCR1016-12S-1S+ comes with redundant power supplies and one RJ45 SFP 10/100/1000M copper module.



- 12 SFP ports for 1 Gigabit connectivity
- SFP+ port for 10 Gigabit connectivity
- 16 core Tiler CPU, 1.2 GHz clock per core
- 12 Mbytes total on-chip cache
- State of the art TILE GX architecture
- Ports directly connected to CPU
- 1U rackmount case
- Color touchscreen LCD display
- Two power supplies for redundancy



The new r2 version has a RJ45 console port and a full size USB slot.

## Specifications

Product code	CCR1016-12S-1S+
CPU	Tilera Tile-Gx16 CPU, 16 cores, 1.2 GHz per core
Size of RAM	2 GB
Storage	128 MB NAND
1G SFP ports	12
10G SFP+ ports	1
Supported input voltage	AC power supply 100 - 240 V
Redundant supply	Yes
USB port	USB type A
Serial port	RJ45
Dimensions	443 x 198 x 44 mm
Operating temperature	-20°C .. +60°C
Operating system	RouterOS, License level 6
Max power consumption	48 W

## Included parts



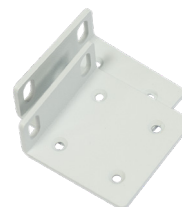
2 IEC cords



RJ45 SFP copper module



Screw and feet kit (K10)



Rack ears