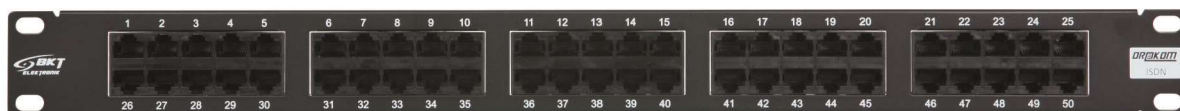


Product Information

Patch panel BKT 19" 1U, ISDN, unshielded, 50xRJ45, black

Card No.: PI_11300011_01.21



Application

BKT IDC Patch panel serve as terminals for wire cables laid vertically or horizontally and function as a connecting point for active equipment working within a network. All elements feature high quality transmission and mechanical parameters.

Features

- Patch panel designed in 19" standard with a height of 1U
- Integrated cabling shelf for securing cables using cable ties
- 50 unshielded RJ45 ports
- Slot connection IDC LSA for cables with 22-26 AWG
- Fixing the wires in the IDC slot can be done by LSA tool
- Black colour RAL 9005
- Size (H x W x D) – 43,8mm x 482,6mm x 92,3mm

Standards

- EN 50173-1
- EN 60297-3-100
- ISO/IEC 11801
- IEC 60297-3-100
- ANSI/TIA-568.2
- EIA-310-E
- RoHS 2011/65/EU



Product Information

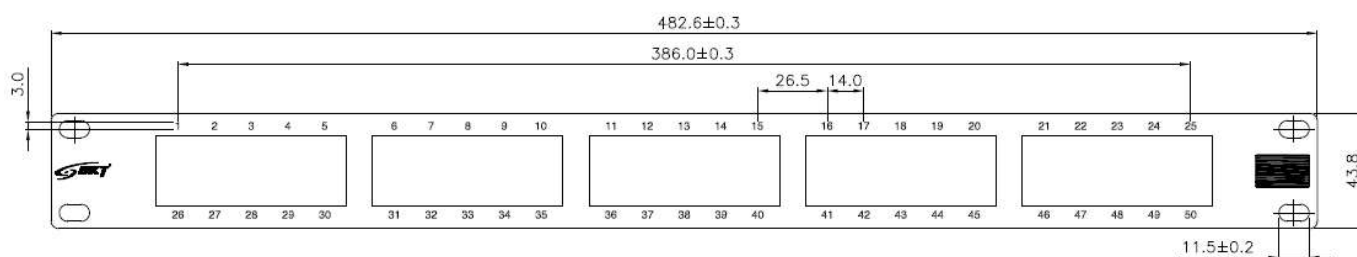
Patch panel BKT 19" 1U, ISDN, unshielded, 50xRJ45, black

Card No.: PI_11300011_01.21

Physical and mechanical properties

Specification	<ul style="list-style-type: none"> - T568A & T568B wiring map printing in IDC slot - housing: galvanized steel tin plated (SECC) 1,5 mm thick, powder painted in black - operation temperature: -40°C to 80°C
Durability	<ul style="list-style-type: none"> - RJ45 socket: 750 cycles plug mating and unmating test, insertion cycles at 20 cycles/minute max. contact resistance test per 100 cycles - IDC: Max 200 strikes for 22÷26 AWG stranded and solid wire, compatible with LSA tool
RJ45 socket	- housing: poli tereftalato butylene (PBT) UL 94V-0
RJ45 socket contact	<ul style="list-style-type: none"> - material: phosphor bronze 1,2÷1,5 µm nickel plated - finish: 1,2 µm gold plated on 1,2 µm - 1,5 µm nickel layer
IDC	<ul style="list-style-type: none"> - housing: PC+5%GF, UL 94V-2 - IDC pins: phosphor bronze 1,2 µm tin plated - adapted for LSA tool
RJ45 plug insertion force	<9N
RJ45 plug retention strenght	>75N

Dimensions [mm]



Performance / Variants

Index	Product description
11300041	Patch panel BKT 19" 1U, ISDN, unshielded, 50xRJ45, black